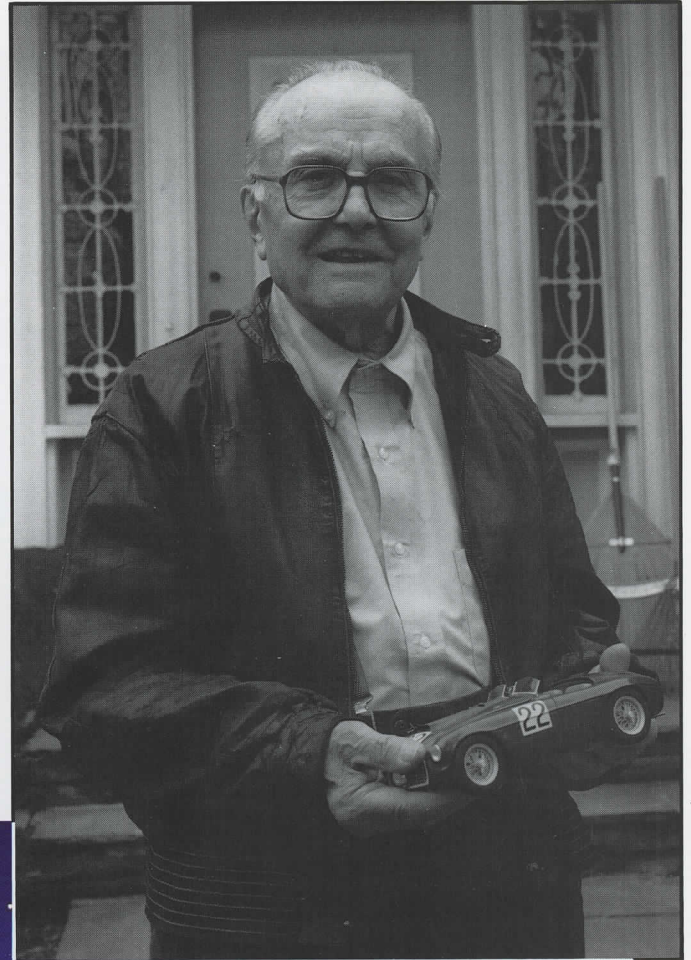
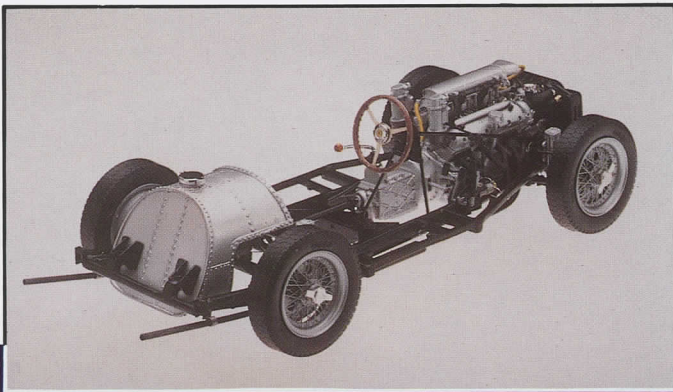


# NEW MODELS

Creative Miniature Associates, Marshall Buck's Connecticut-based model manufacturing shop, has begun shipments of their 1:14 scale Ferrari 166 MM Barchetta. There are three versions: a road-going car (based on Ed Gilbertson's s/n 0058M), the 1949 LeMans winner of Luigi Chinetti, Sr., (s/n 0008M), and Jacques Swaters' ex-Agnelli Barchetta – the blue and green s/n 0064M. The models have been "in development" for several years, with multiple revisions to ensure absolute accuracy and fidelity to detail. The Chinetti and Swaters cars are limited editions, each on bases signed by their famous owners (Chinetti is pictured with a model during the signing), and the model has been approved by Carlo Anderloni of Touring, creator of the Barchetta coachwork.

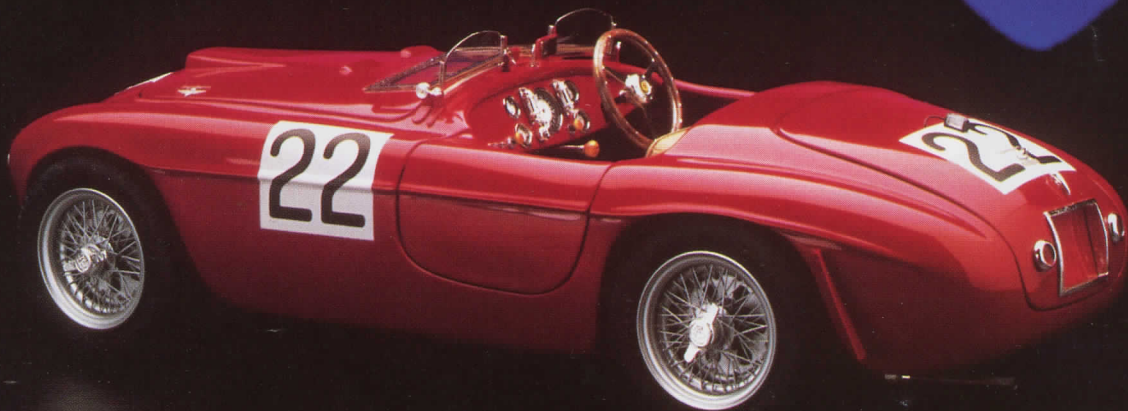
The bare chassis of the models gives an idea of the amount of detail possible in this scale; each version has the unique chassis and body details of the real car.

While few of us will ever have the opportunity to own the full-sized car, a model of this scale and accuracy perhaps offers the "next best thing."



PHOTOS BY JOHN LUTSCH

PHOTO BY JESSE L. ALEXANDER



*Prancing Horse #106 - First Quarter 1993*